

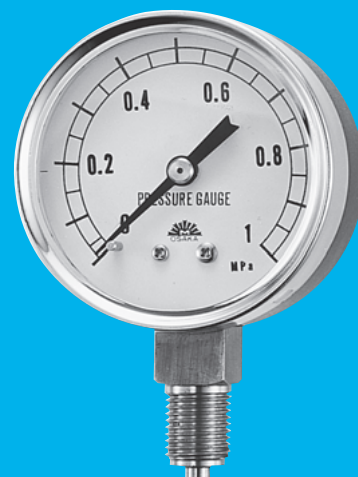
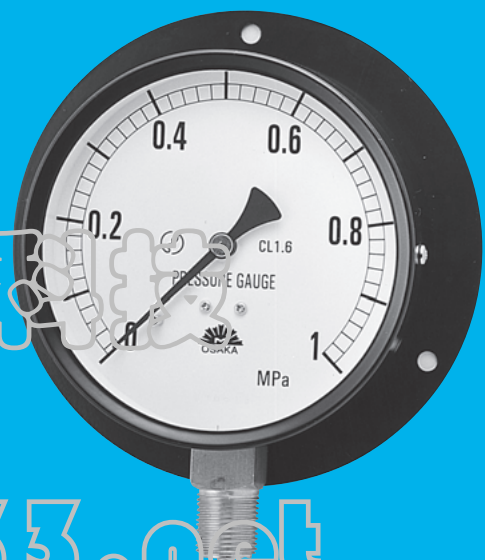
NEW LIGHT WEIGHT GAUGE

DESCRIPTION

The New Right Gauge is of universal type lending itself to a broad spectrum of piping and industrial use. The performance meets the total requirements specified in JIS B7505 (ordinary type). Further, cost reduction is one of the main concerns of the product concept. The New Right Gauge is sure to be an economical answer to budget-concerned projects without sacrificing reliability in performance.

FEATURES

- Price is very competitive due to Asahi's rational mass production system.
- Gauge performance totally meets the requirements as noted in JIS B7505 (ordinary type).
- Prompt shipping is always possible from rich stock.



ASAHI GAUGE MFG. CO., LTD.
JAPAN

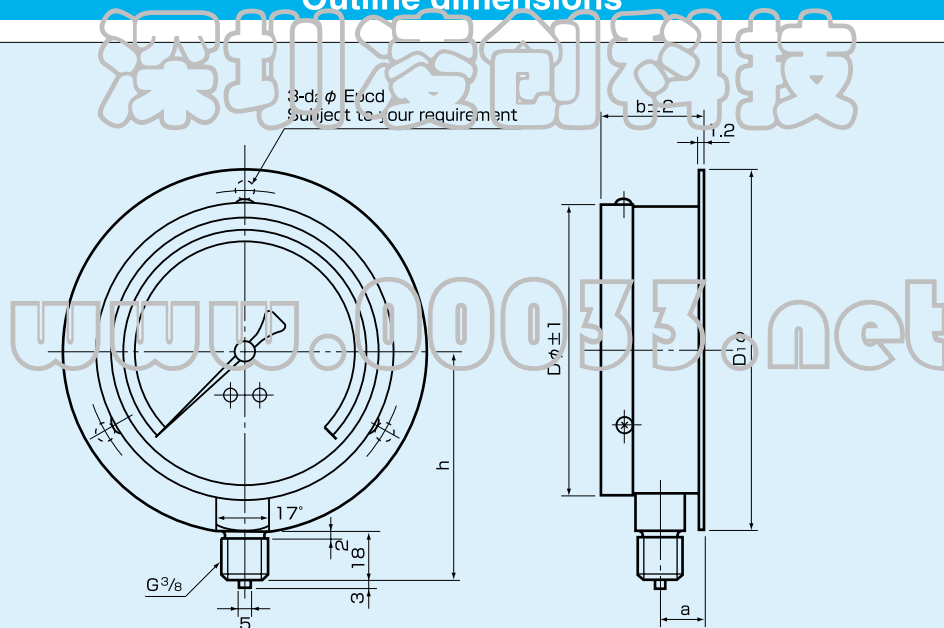
STANDARD SPECIFICATION

| Model | 102-A230 | 102-B340 | 102-B350 |
|-------------|---|-------------------------------|-------------------------------|
| Dial Size | 60 | 75 | 100 |
| Type | AT | BT | BT |
| Connection | G ¹ / ₄ | G ³ / ₈ | G ³ / ₈ |
| Case | SP Black Bezel Chrome Plated | SP Black | SP Black |
| Material | BRASS | BRASS | BRASS |
| Accuracy | ±1.6%FS | ±1.6%FS | ±1.6%FS |
| Temperature | -5~45°C | | |
| Other | Pointer Stop at 1MPa with 3 holes for 75, 100 | | |

STANDARD CALIBRATION

| MPa | Size | | |
|----------|------|----|-----|
| | 60 | 75 | 100 |
| 0~0.1 | ○ | ○ | ○ |
| 0.2 | ○ | ○ | ○ |
| 0.25 | ○ | ○ | ○ |
| 0.3 | ○ | ○ | ○ |
| 0.4 | ○ | ○ | ○ |
| 0.5 | ○ | ○ | ○ |
| 0.6 | ○ | ○ | ○ |
| 0.7 | — | ○ | ○ |
| 1 | ○ | ○ | ○ |
| 1.5 | ○ | ○ | ○ |
| 1.6 | — | ○ | ○ |
| 2 | ○ | ○ | ○ |
| 2.5 | ○ | ○ | ○ |
| 3.5 | ○ | ○ | ○ |
| 5 | ○ | ○ | ○ |
| -0.1~0 | ○ | ○ | ○ |
| -0.1~0.1 | — | ○ | ○ |
| 0.2 | ○ | ○ | ○ |
| 0.4 | ○ | ○ | ○ |
| 0.6 | ○ | ○ | ○ |
| 1 | — | ○ | ○ |
| 1.5 | — | ○ | ○ |
| 2 | — | ○ | ○ |

Outline dimensions



| Size | D | D1 | b | h | (d2) | (E) | a | Weight(Net) |
|------|-----|-----|------|----|------|-----|----|-------------|
| 75 | 78 | 98 | 35.5 | 70 | 4.5 | 88 | 14 | 400g |
| 100 | 103 | 128 | 37.5 | 82 | 5.5 | 115 | 14 | 580g |
| 60 | 63 | — | 30 | 58 | — | — | 10 | 135g |

Note) Specifications are subject to change without notice.

